



2 March 2016

To: Users of The Broker's Workstation and/or The Underwriter's Workstation

Dear Valued Client:

Re: The Broker's Workstation and The Underwriter's Workstation – Important Releases and Changes

Custom Software Solutions Inc. (CSSI) is pleased to announce the release of the following enhancement to **The Broker's Workstation (TBW)** and **The Underwriter's Workstation (TUW)**:

Contents

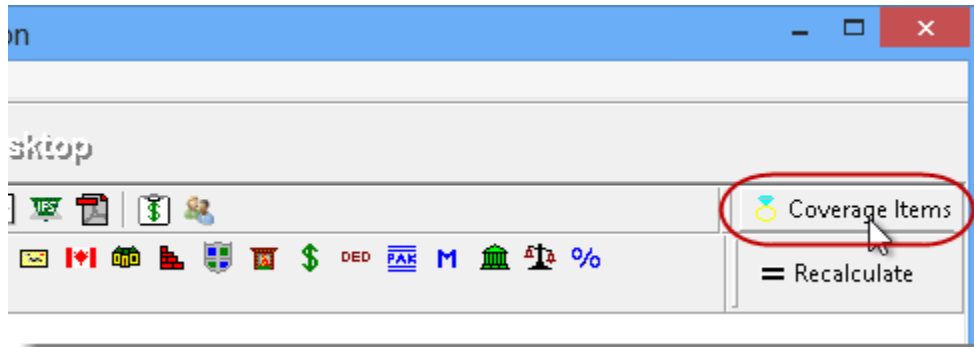
1. [Enhanced Water Damage Endorsement for Intact/Novex \(ON\)](#) – Effective February 8, 2016 for new business and renewals, an Enhanced Water Damage endorsement is available in TBW/TUW for homeowners and seasonal broad policies with Intact/Novex.

1. Enhanced Water Damage Endorsement for Intact/Novex (ON)

Effective February 8, 2016 for new business and renewals, an Overland Water Enhancement is available in TBW/TUW for brokers doing business with Intact/Novex. This enhancement, which is being introduced as the Enhanced Water Damage endorsement, is available for homeowners and seasonal broad policies with Intact/Novex.

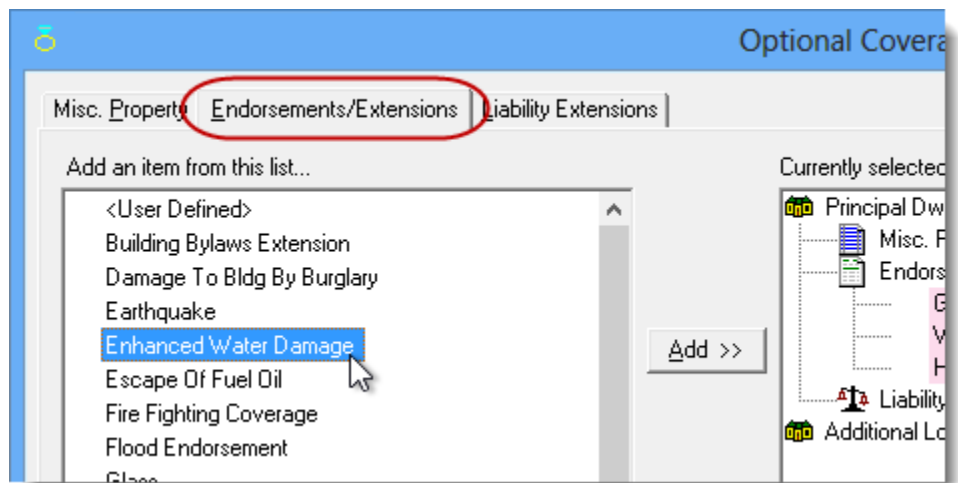
To add this endorsement to a new or existing IntelliQuote, click the **Coverage Items** button on the IntelliQuote toolbar (see Figure 1.1).

(Figure 1.1)



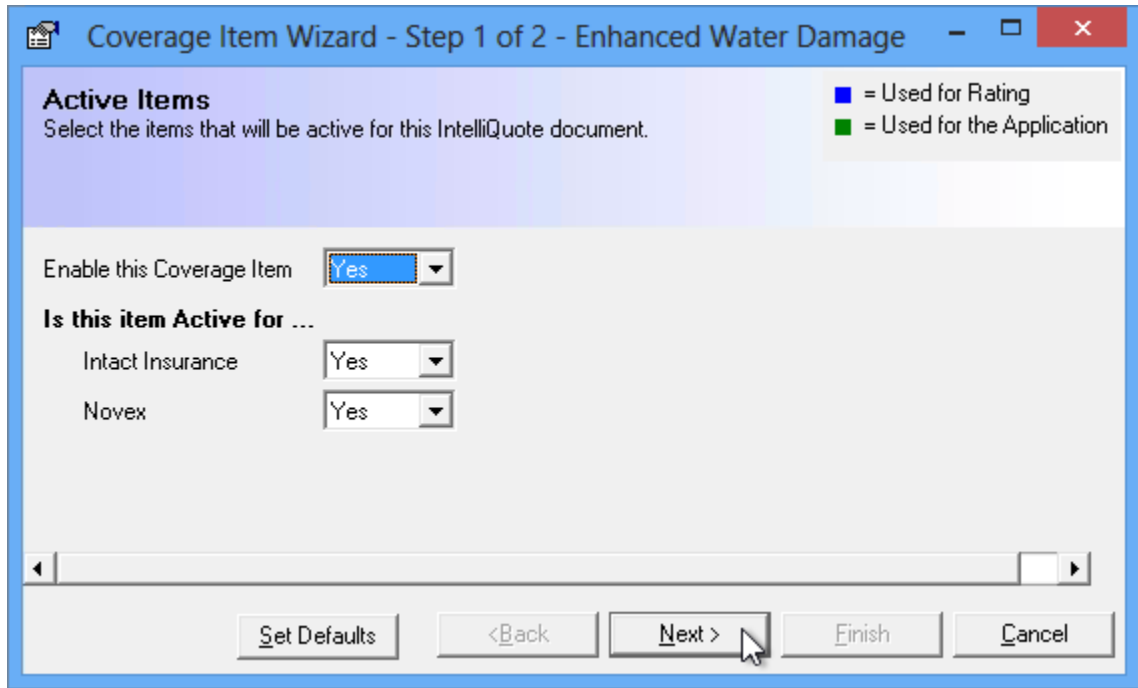
Then, in the **Optional Coverages** dialog, double-click **Enhanced Water Damage** on the **Endorsements/Extensions** tab (see Figure 1.2).

(Figure 1.2)



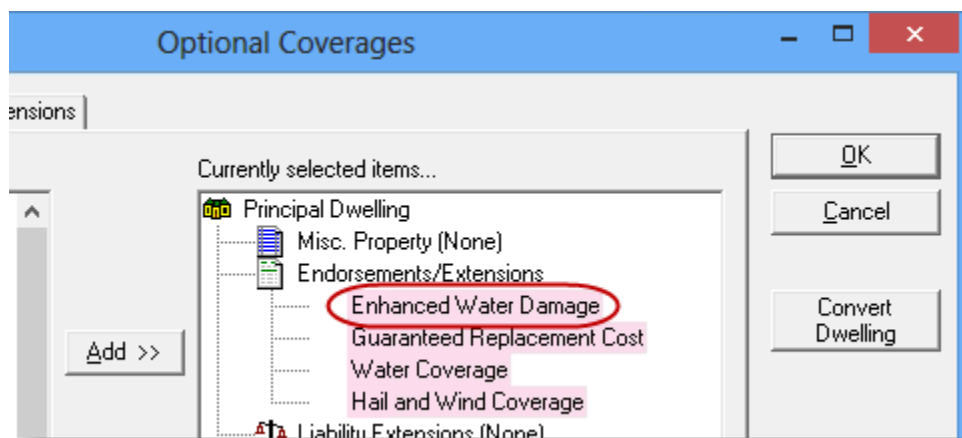
Enter applicable details with the help of the **Coverage Item Wizard** that displays (see Figure 1.3), using the **Next** button to move from one screen to the following, and then click **Finish**.

(Figure 1.3)



The Enhanced Water Damage endorsement will display in the **Currently selected items** list in the **Optional Coverages** dialog (see Figure 1.4).

(Figure 1.4)

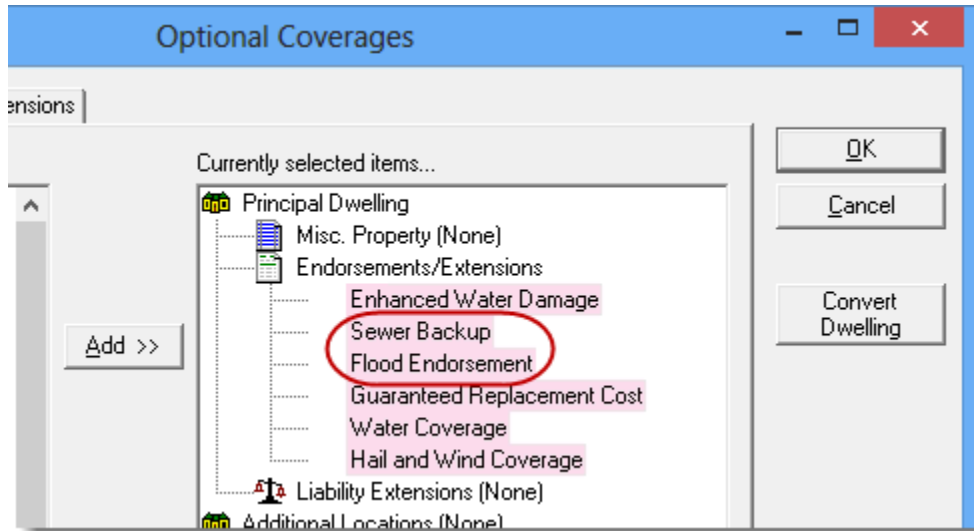


Please note, when the Enhanced Water Damage endorsement is added to an IntelliQuote, Sewer Backup and Flood Endorsements must also be added to the IQ. On the Endorsements/Extensions tab in Optional Coverages, add each of these endorsements to the IQ with the help of the Coverage Item Wizard, selecting the desired Coverage Limit and Deductible.

- **Important: The Coverage Limits and Deductibles for Sewer Backup, Flood, and Ground Water Endorsements must be the same.**
- Please note that deductibles cannot be less than the risk deductible.
- Sewer backup rules and limits apply to the overland water zones.

- These endorsements will also display in the **Currently selected items** area once they have been added in Optional Coverages (see Figure 1.5).

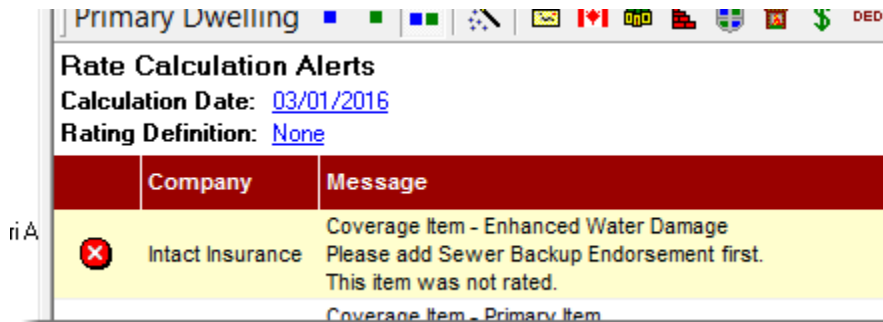
(Figure 1.5)



Complete the IntelliQuote in the usual manner, and remember to click the **Recalculate** button on the IQ toolbar to update the IQ with any changes.

If the Enhanced Water Damage endorsement has been added to the IQ, but the Sewer Backup and Flood Endorsements have not, an **Alert** will display to remind you to add these items (see Figure 1.6).

(Figure 1.6)



Adding the Enhanced Water Damage, Sewer Backup, and Flood Endorsements to the IntelliQuote encompasses the Enhanced Water Damage Endorsement / Overland Water Enhancement. The **Ground Water Endorsement** can also be selected and added in **Optional Coverages**, if desired.

- The Ground Water Endorsement is optional; however, you will not be able to purchase it without the Enhanced Water Damage Endorsement.
- Please remember: The Coverage Limits and Deductibles for Sewer Backup, Flood, and Ground Water Endorsements must be the same.

If the risk falls within a zone not applicable for the Enhanced Water Damage Endorsement/Overland Water Coverage, Sewer Backup and Water and Sewer Lines Endorsements are available.

[Return to Contents](#)

Please share this information with the appropriate TBW and TUW users in your office(s). Once you have reviewed this document, if you have any questions regarding these features or need further assistance in their usage, please contact our Client Services Team at clientservices@cssionline.com (email) or 1-888-291-3588 (toll-free telephone).

Thank you for using The Broker's Workstation and The Underwriter's Workstation.

Yours sincerely,

Custom Software Solutions Inc.



Microsoft Partner

Gold Independent Software Vendor (ISV)

To unsubscribe from our email notifications and updates, please contact us at info@cssionline.com or reply to this email.