



14 November 2012

To: Users of The Broker's Workstation and The Underwriter's Workstation

Dear Valued Client:

Re: The Broker's Workstation and The Underwriter's Workstation – Important Releases and Changes

Custom Software Solutions Inc. (CSSI) is pleased to announce the release of the following enhancement to **The Broker's Workstation (TBW)** and **The Underwriter's Workstation (TUW)**:

Contents

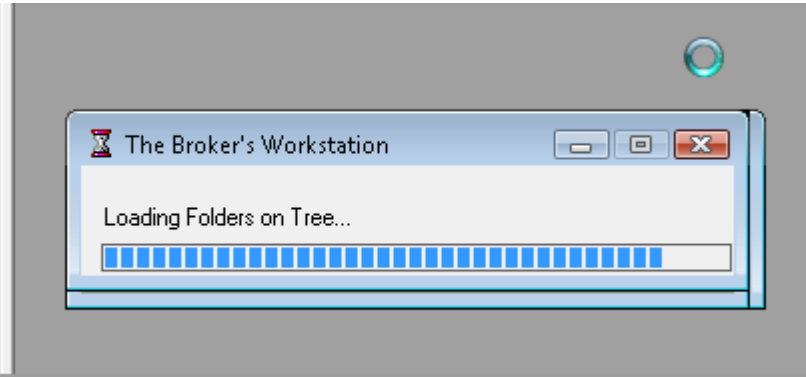
1. [Improved Load Times for TBW/TUW](#) – With this program enhancement, TBW/TUW will load more quickly and be ready to use sooner.

1. Improved Load Times for TBW/TUW

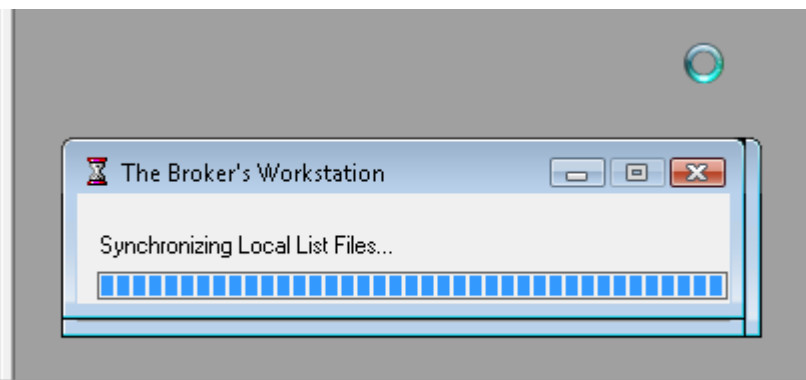
Custom Software Solutions Inc. is pleased to announce an enhancement to the TBW/TUW start-up procedure resulting in an improved load time for TBW/TUW.

With this enhancement, the TBW/TUW login screen will display more quickly when the program is opened, and the overall program load time will be improved. In addition, various load status details will be provided during the process (e.g. Figures 1.1 – 1.3).

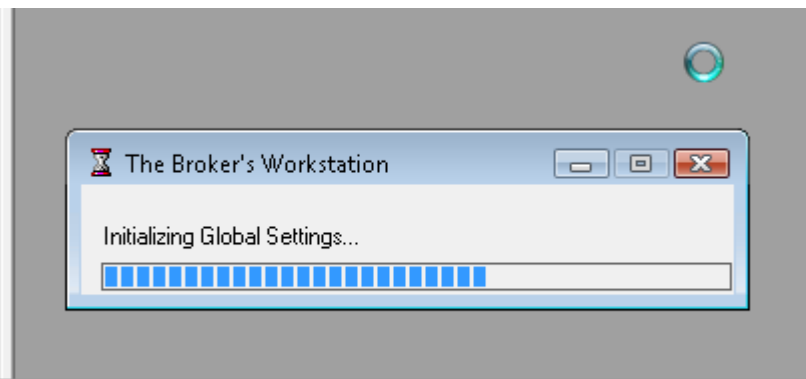
(Figure 1.1)



(Figure 1.2)



(Figure 1.3)



[Return to Contents](#)

Please share this information with all TBW/TUW users in your office(s). Once you have reviewed this document, if you have any questions regarding this enhancement, or need further assistance in its usage, please contact our Client Services Team at clientservices@cssionline.com (email) or 1-888-291-3588 (toll-free telephone).

Thank you for using **The Broker's Workstation** and **The Underwriter's Workstation**.

Yours sincerely,

Custom Software Solutions Inc.



Microsoft Partner

Gold Independent Software Vendor (ISV)