



8 July 2009

**To: The Broker's Workstation Users**

Dear Valued Client:

## **Re: The Broker's Workstation – Important Releases and Changes**

Custom Software Solutions Inc. (CSSI) is pleased to announce the release of the following enhancement to **The Broker's Workstation (TBW)**:

### *Contents*

---

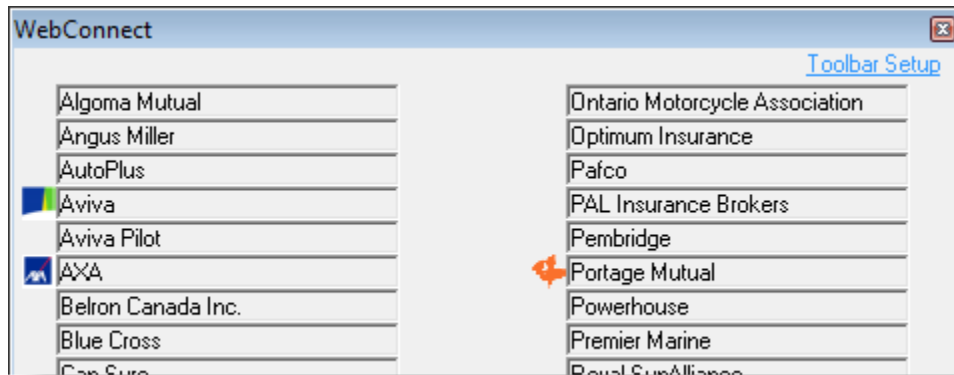
1. [Expanded Integration Services to SGI Canada's Websites](#) – Integration services to SGI Canada's websites through use of TBW's WebConnect tool have been expanded.

## **1. Expanded Integration Services to SGI Canada's Websites**

We are pleased to announce expanded integration services to SGI Canada's websites through use of TBW's WebConnect tool.

The WebConnect feature allows the TBW user to access various insurance company and service bureau websites quickly and easily directly from the TBW interface. When the TBW user clicks the **WebConnect button** on the TBW toolbar, the list of companies and services available through WebConnect opens in the **WebConnect window** (see Figure 1.1).

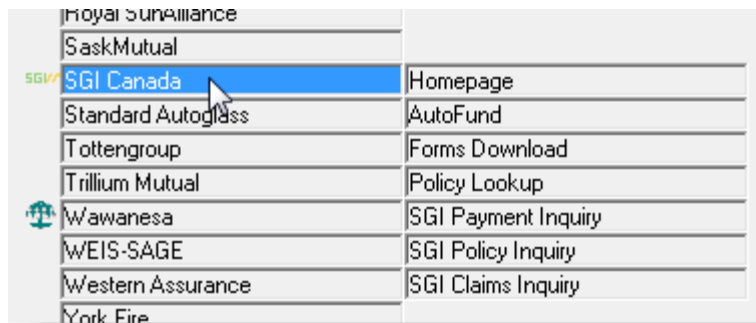
(Figure 1.1)



The following list items have been updated:

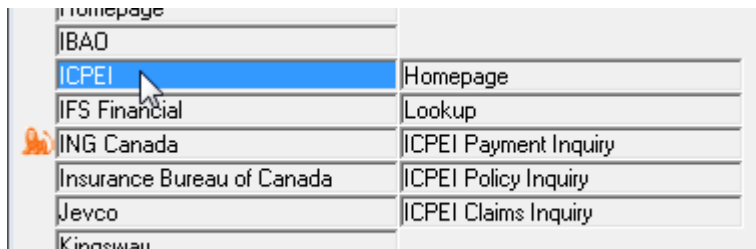
- SGI Canada:** Clicking the SGI Canada link will now provide the user with access to billing, policy, and claims inquiries, in addition to the Homepage, AutoFund, Form Download, and Policy Lookup (see Figure 1.2).

(Figure 1.2)



- ICPEI:** Through the Insurance Company of Prince Edward Island option in WebConnect, the user can still connect to the Homepage and Lookup page, and now also access Payment, Policy, and Claims Inquiries pages (see Figure 1.3).

(Figure 1.3)



- **Coachman:** Use the Coachman Insurance Company link in the WebConnect feature to open the Coachman Homepage, or to visit Payment Inquiry, Policy Inquiry, or Claims Inquiry pages on their website (see Figure 1.4).

(Figure 1.4)

Checkpoint	SGW	SGI Canada
CLASHome		
<b>Coachman</b>	Homepage	\$
Coast Underwriters	Coachman Payment Inquiry	
CSID	Coachman Policy Inquiry	
CUSL	Coachman Claims Inquiry	
Dominion of Canada	W/FIS-SAGE	

Access to TBW's WebConnect feature is controlled by User Rights (**Tools, Administrative, User Manager, Rights**).

*Please contact Client Services at 1-888-291-3588 (toll-free telephone) for assistance in setting up this feature.*

[Return to Contents](#)

Please share this information with all TBW users in your office(s). Once you have reviewed this document, if you have any questions regarding this enhancement, or need further assistance in its usage, please contact our Client Services Team at [clientservices@cssionline.com](mailto:clientservices@cssionline.com) (email) or 1-888-291-3588 (toll-free telephone).

Thank you for using **The Broker's Workstation**.

Yours sincerely,

Custom Software Solutions Inc.

